



UTECO DIGITAL ECOSYSTEM

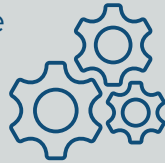
A NEW WAY TO CONNECT
MACHINES AND DEVICES



Our Digital Ecosystem

A new way to **connect machines and devices.**

Software



LUNA
App



IoT



POLARIS
HMI



Our Digital Ecosystem

A new way to **connect machines and devices.**



NEBULA

Why? The Nebula is a type of Galaxy.

It is the space that put in motion both our stars and satellites.



POLARIS HMI

Why? The Polaris star is **the brightest star in our Galaxy.** It is the guiding light for all sailors, just like **our HMI guides the operators in the use of the machine.**



LUNA App

Why? Luna is the name for a **satellite that revolves around a planet and reflects the light from a star.** Much like the moon, **our App reflects the data from our HMI,** bringing it to our customers remotely.



ORION

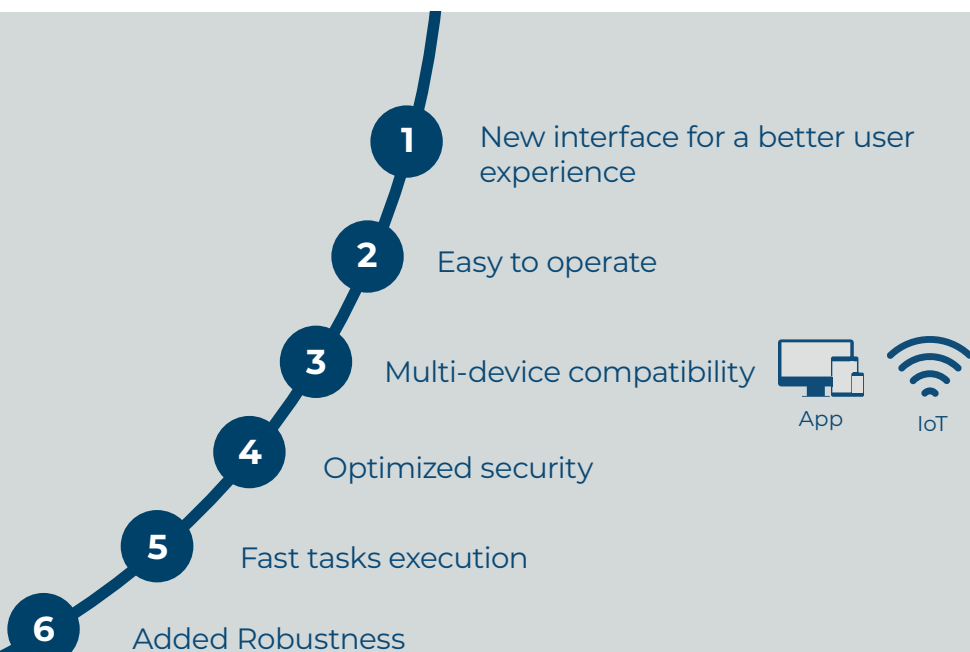
Why? Orion is a constellation connecting a prominent set of stars. Similarly, **our network connects the HMI to the multi-device App (and vice-versa).**



Our Digital Ecosystem

A new way to **connect machines and devices**.

Our Digital Ecosystem: HMI



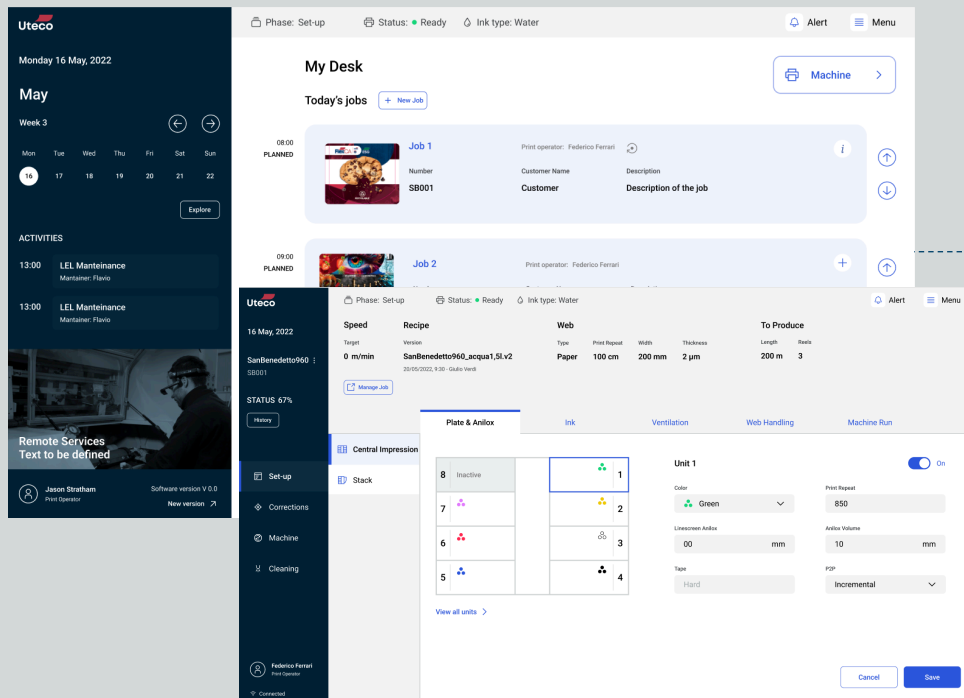
Our Digital Ecosystem

New interface for a **better user experience**.



Our Digital Ecosystem

New interface for a **better user experience**.



User-friendly and newly designed interface, simple and clean

Immediate interface, less icons, more understandable information

Printing group organized in a schematic way

Fast time to market thanks to lean and easier software set-up

Our Digital Ecosystem

Easy to operate.



Our Digital Ecosystem

Easy to operate.

The screenshot displays the Uteco digital ecosystem interface. On the left is a dark sidebar with navigation options: 'Set up', 'Corrections', 'Machine', and 'Cleaning'. The main area shows an 'Alert' section with a table of alerts. Below the table, a 'Troubleshooting' modal is open, displaying details for a specific alert, including a 3D machine diagram, instructions, and a QR code.

Uteco

16 May, 2022

SanBenedetto960 : SB001

STATUS 67%

History

Set up

Corrections

Machine

Cleaning

Federico Ferrari First Name

Connected

Phase: Production Status: Ready Link type: Water

Alert Menu

Alert

All Central impression (2) Rewinder Infeed 1 (3) Filters

Time	Type	Group	Sub-Group	Description	Notes	Code
8:10	Warning	Central impression	Pressurization	Flow switch	Testo	0001
8:10	Warning	Central impression	Pressurization cabinet	Pressure switch P058531	Testo 2	019283
8:10	Warning	Tunnel	Pressurization	Pressostato ventilazione	Testo 3	23123

Alert

Troubleshooting

Time: 8:10 Code: 019283 Group: Central impression Note: Pressurization Cabinet

Type: Warning Pressure switch: P058531 Sub-Group: Pressurization Cabinet

Machine 3D

Instructions

Pressure switch Location sensor: Electrical cabinet

How to solve

TROUBLESHOOTING

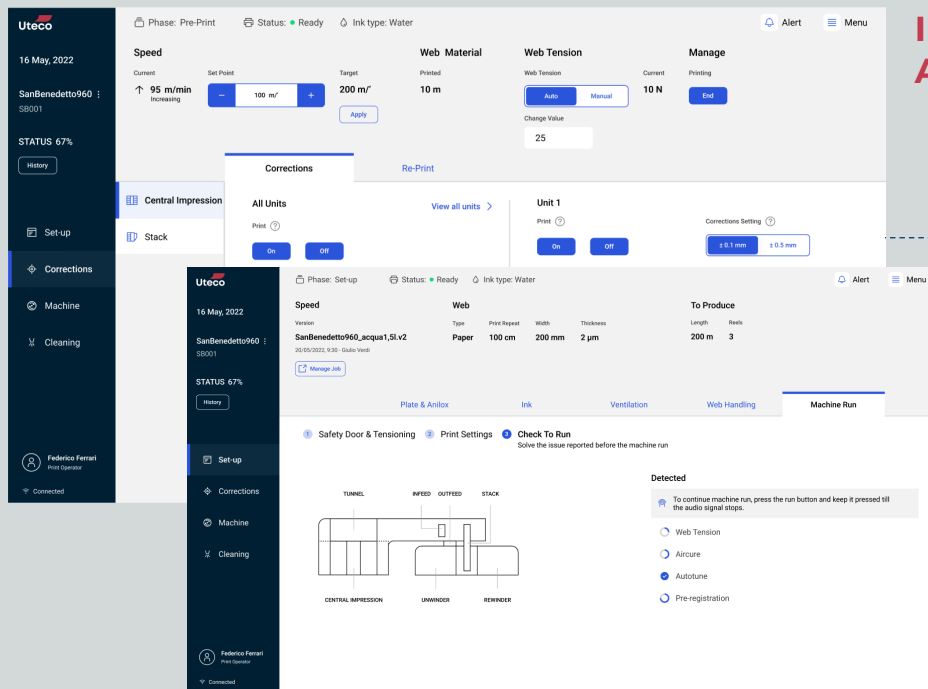
Suited for average-expertise users

Clear explanation of the errors going on in the machine

Visual aid for error representation in the troubleshooting alert

Our Digital Ecosystem

Easy to operate.



**INFORMATIVE
ARCHITECTURE**

**Tool-tip with an explanation next
to each command**

**Actions check-list that guides the
user in the process**

**Visual feedback on machine check
steps and errors to be corrected**



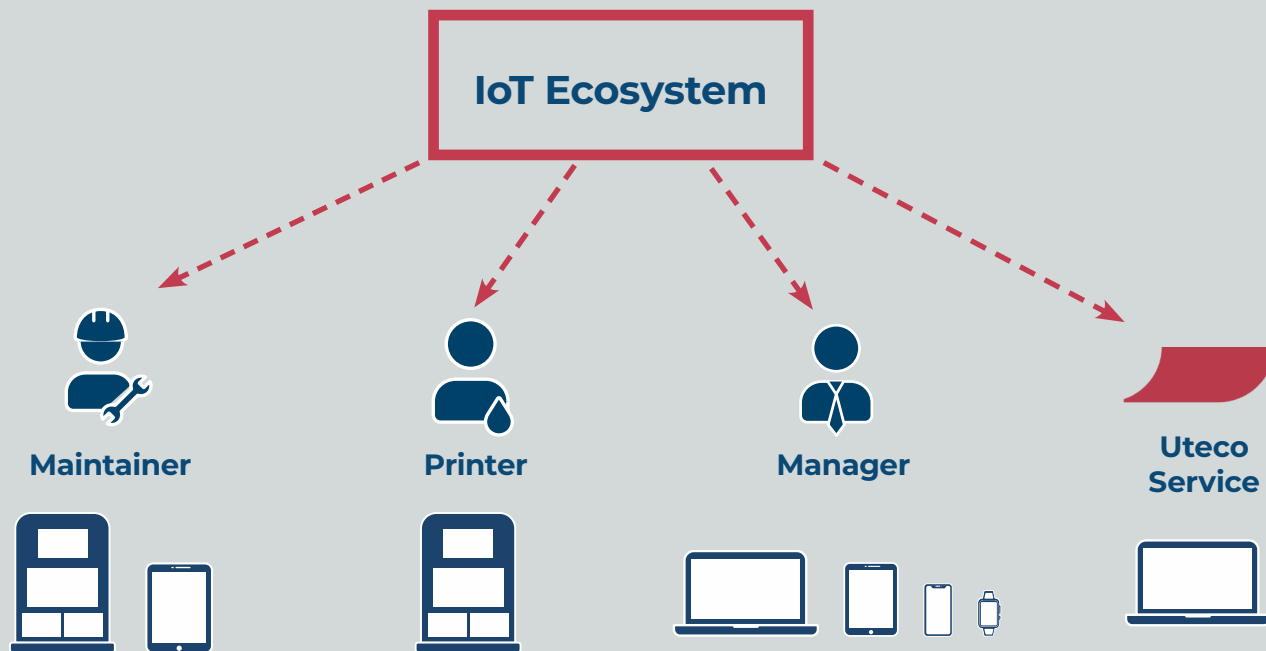
Our Digital Ecosystem

Multi device compatibility.



Our Digital Ecosystem

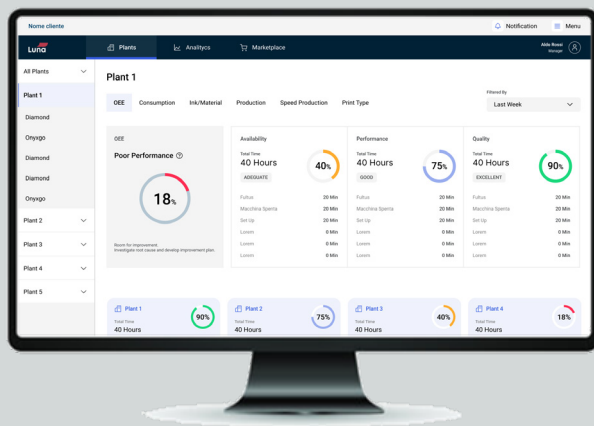
Information **accessibility** for end-users.



Our Digital Ecosystem

Multi device compatibility.

DESKTOP



Real-time monitoring of plants and machines performance



Real-time alerts for prompt problem handling



Calendar & Workload management from remote

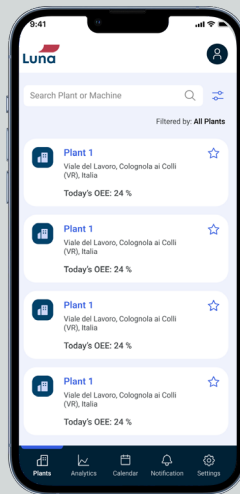
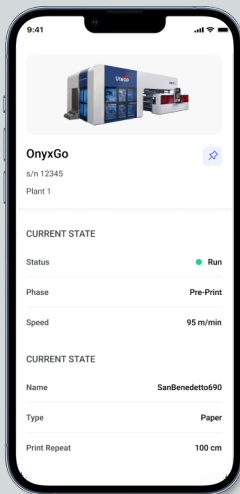


Marketplace to acquire additional services

Our Digital Ecosystem

Multi device compatibility.

PHONE APP



Real-time monitoring of plants and machines performance



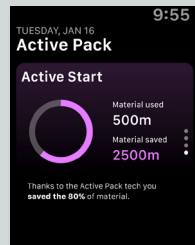
Real-time alerts for prompt problem handling



Our Digital Ecosystem

Multi device compatibility.

SMARTWATCH



Real-time monitoring of plants and machines performance



Real-time alerts for prompt problem handling

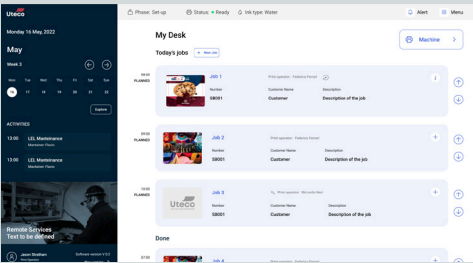
Our Digital Ecosystem

Optimized security.

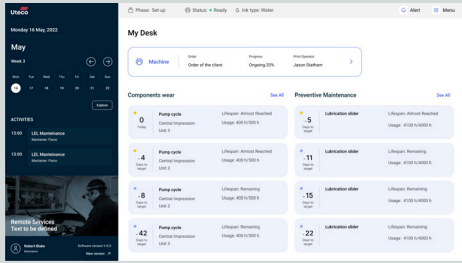


Our Digital Ecosystem

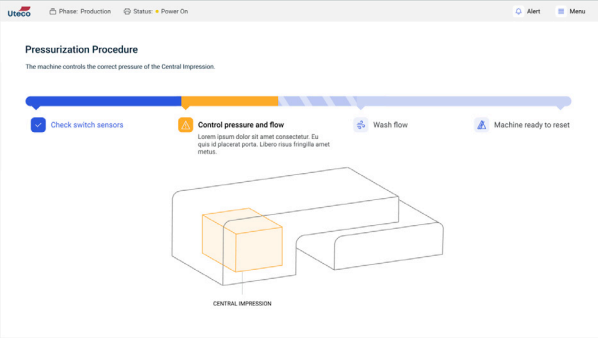
Optimized security.



Printer view



Maintainer view



LOG IN

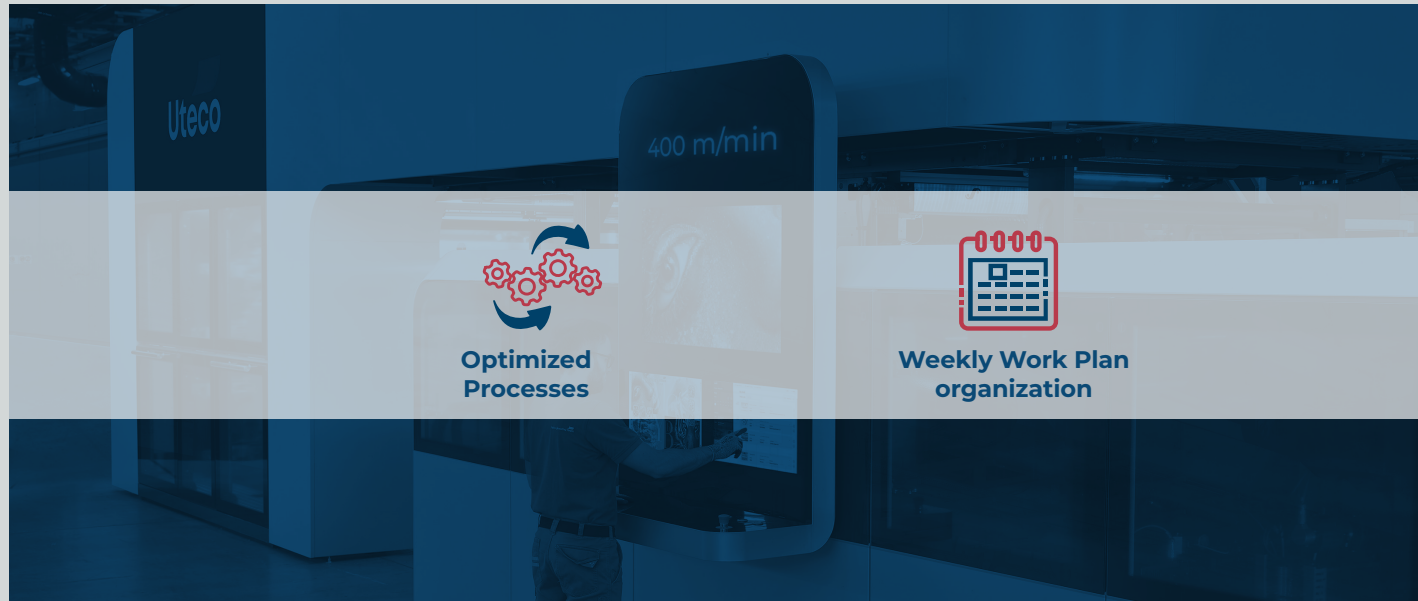
Different accounts to get different information based on the role

Feedback on the progress of preliminary operations to reduce error

Explanation on the location of the error to facilitate the resolution

Our Digital Ecosystem

Fast tasks execution.



Our Digital Ecosystem

Fast tasks execution.

New Job

1 Define Job 2 Attach Recipe

Insert data to start

Order

Name: Insert Number: Insert

Customer Name: Insert

Description: Insert

Web

Type: Select Print Repeat: 0 mm

Width: 00 mm Thickness: 00 µm

Machine Settings: Select

PRODUCTION

Length: 200 m Reels: 3 Meter reels: 75 m

Recipes

Search

Name	Version	Customer Name	Type	Print Repeat	Width	Thickness	Kind	Owner	View and edit
JAB1_acqua1.SI	3	Customer	PPL	100 x 100	30000 mm	0.3 mm	Editable	Fernat	Detail
JAB2_acqua1.SI	3	Customer	PPL	100 x 100	30000 mm	0.3 mm	Editable	Fernat	Detail
New Recipe	-	-	PPL	100 x 100	30000 mm	0.3 mm	Editable	To be defined	Detail

Back Confirm

IMPROVED EFFICIENCY

10x faster Recipe upload and Job start

Consult the weekly work plan by consulting the calendar

List of recipes that can be consulted even when the machine is printing

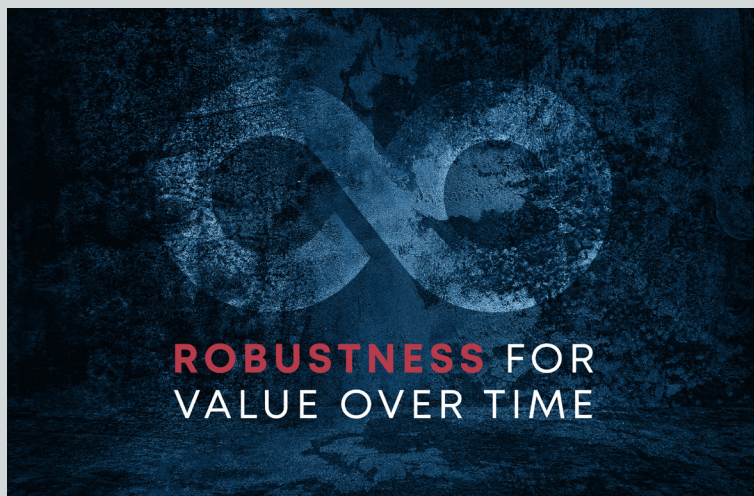
Our Digital Ecosystem

Added Robustness.



Our Digital Ecosystem

Our **Best Value** yet: **Robustness**.



At Uteco, we understand the importance of investing in machinery that not only delivers cutting-edge technology and design but also **stands the test of time** thanks to its **robust build**. Our machines are meticulously crafted in Italy, blending exquisite aesthetics with the latest advancements in technology. With an average of 15 years, **our machines ensure the longest lifespan in the market.**

We take pride in providing our customers with beautifully designed, technologically advanced machines that **provide optimal operation for an extended period of time.**

Our Digital Ecosystem


Added Robustness.

1. Direct communication of errors with reference in machine to reduce the risk of breaking down
2. Manager view to communicate with the DSP and request maintenance
3. Constant HMI updates that keep the machine up to date



Our Company

Printing and Converting: All Round **High Tech Innovation.**



We provide innovative and flexible solutions from a wide range of **flexographic, rotogravure, digital printing, laminating and coating machines** and a corollary of comprehensive training and support services.

We develop **special and customized configurations** of high technological value, with an ongoing commitment to research and **innovation, organizational flexibility, engineering capabilities for final solutions**, optimization of production processes, and a fast and efficient worldwide service network.

Our Customer Service

Our Customer Service has **Everything You Need.**

Our expert **Customer Service teams** are **available 24/7** to respond quickly and effectively to requests for maintenance, repairs and operational renovations to machinery and systems, **both on-site and remotely (My Portal).**

Ready for your
new machine?
Don't forget about
our customer service



Find out more!

On Field Assistance

We provide complete **life-cycle support services and printing processes** to ensure maximum performance throughout the entire lifespan of the machine.

Remote Assistance

Thanks to the newest technologies available on the market we guarantee **the best real-time support.**

Upgrades Service

We provide improvements of the efficiency and performances of your machine's processes, aligning them to the **latest technological market trends.**

Spare Parts

We have a series of spare parts checked and guaranteed by us.

Equipment

We offer equipment solutions to be added to your specific machine to **boost its performance and efficiency.**





Uteco Converting SpA

Viale del Lavoro, 25
37030 Colognola ai Colli (VR)
Ph: +39 045 6174555
utecovr@uteco.com
www.uteco.com



Data, features and photos shown are not binding.
Uteco Group reserves the right to make any changes without prior notice.